



### To Install SendATemp

Go to the Google Play Store and search for SendATemp or click on the link below




INSTALL, then open the app.

When you open the App for the first time you will be asked to allow location, please allow this.

You then will be asked to allow connection to nearby devices, again allow this.

## Using SendATemp

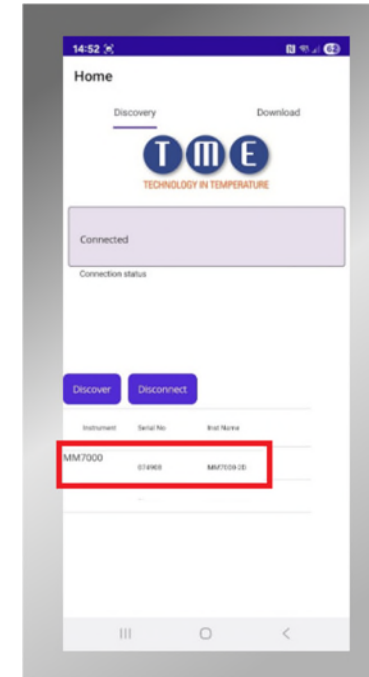
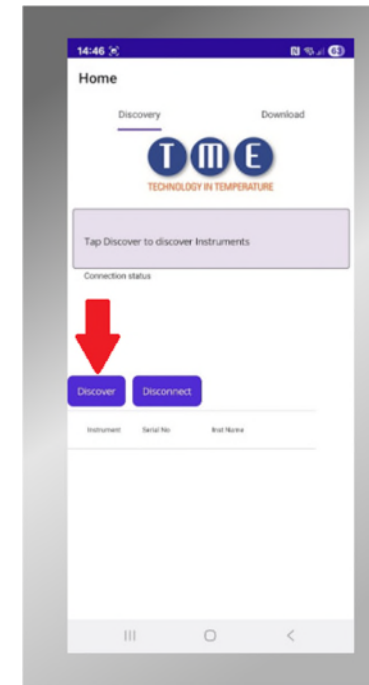
*Please only connect one thermometer at a time*

Ensure that your MM7000-2D thermometer is switched on and in  
Bluetooth Mode 

Press the **Discover** button to find any nearby instruments, these  
will be listed below.

Please tap on the instrument you wish to download data from and  
the app will then connect to the instrument.

This will be confirmed by the message “Connected” in the  
message area, along with the Serial Number Name of the  
Instrument



Once connected, to download the data please press on the word Download in the top right area.



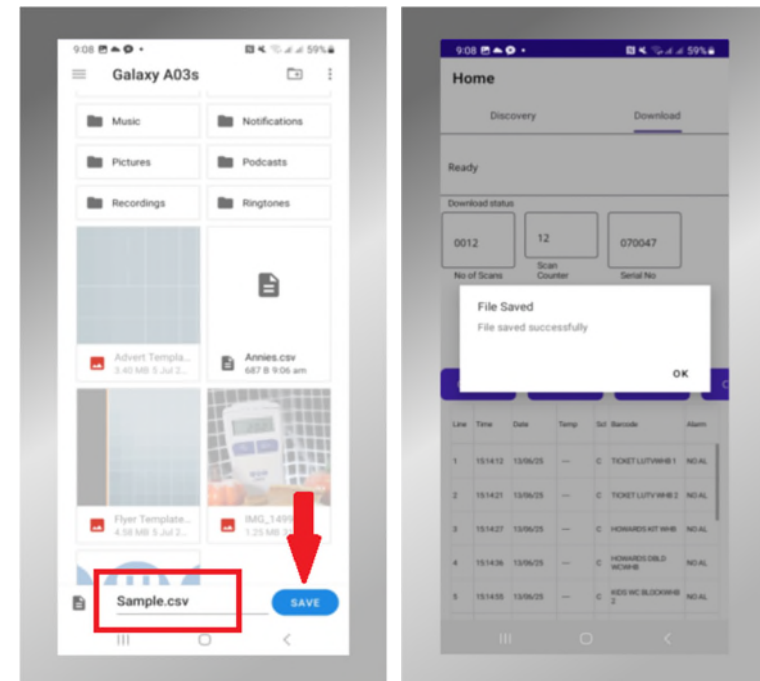
Then Tap on the “Get Data” button and the data will then appear.



To convert the data to a CSV file please Tap on the Ex 2 CSV Button



Give your file a name and click Save



Now you can email your information and, if you choose clear information from your phone. To do that Click on Clear Grid



Once you know your csv file has been saved and sent, you may also wish to clear the scanned data from the MM7000-2D

To do this, swipe left on your phone screen to show the Clr Inst Button and click

